

B2*

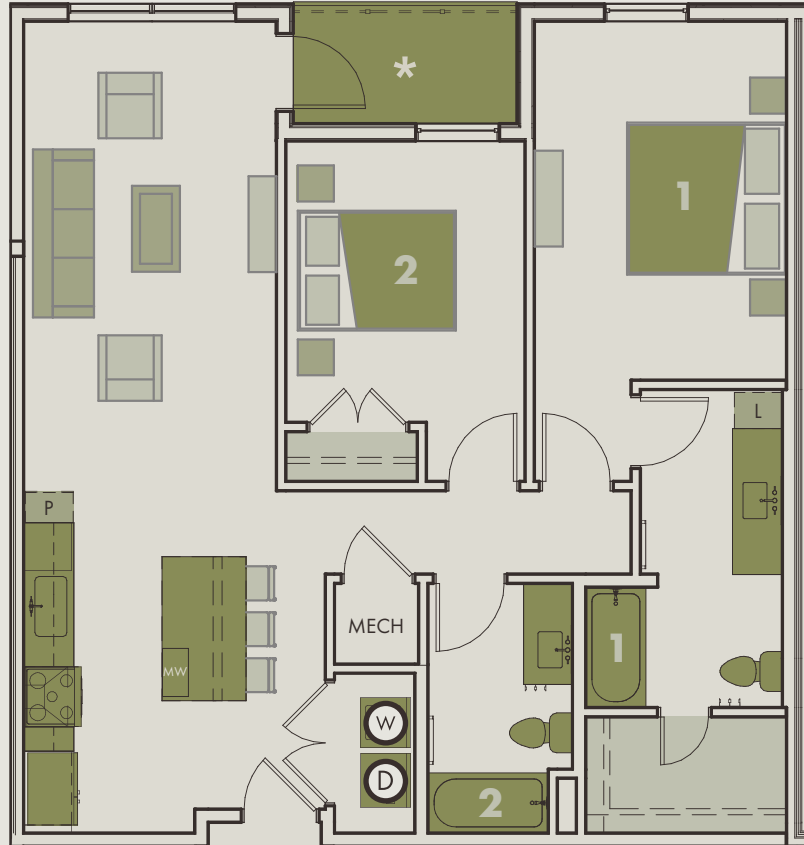
2 BED

2 BATH

1078 SF



* Gate with courtyard access and extended patio on Level 4



- BEDROOM 1** 10'3" x 14'10"
- BEDROOM 2** 9'10" x 11'7"
- KITCHEN** 12'5" x 14'2"
- LIVING ROOM** 10'4" x 19'6"
- BALCONY** 9'2" x 4'6"

Exclusively Listed by
PROSPECT
REAL ESTATE



* City of Austin Affordable Housing Program

ParksideMueller.com

Floor plans are not to scale, dimensions are approximate, and may vary from the description of the unit in the condominium declaration. Materials are based on a photographic representation and are illustrative. You should review the actual materials at the sales once prior to making your finish selections. Furnishings shown in the photographs are not included. Certain images are based on photos or digital representations and have been artistically assembled and/or retouched. Views may change based on development or other factors. The materials, designs, square footages, features and amenities depicted by artist's or computer rendering are subject to change and no guarantee is made that the project or the condominium units will be of the same size or nature as depicted or described.